



## AYUS DEVICES CUT SHEET

Ayus Water Activation Devices/Fittings are manufactured to the following specifications:

- ✓ The fitting body is made of 316 Stainless Steel
- ✓ The insert is made of Brass
- ✓ Threads are **EST** (European Standard Thread)
- ✓ Flanges are **DIN** PN25



## AYUS COMMERCIAL DEVICES

COMMERCIAL WATER DEVICES	MAX. PRESSURE RATING*1	FITTING WEIGHT	CATALOG NUMBER
Ayus 1/2" female to 1/2" male EST	150 psi /10 bar /1,035 kPa	.5 lbs / 198 g	A050EST
Ayus 3/4" female to 3/4" male EST	150 psi /10 bar /1,035 kPa	.8 lbs / 359 g	A075EST
Ayus 1" female to 1" male EST	150 psi /10 bar /1,035 kPa	1.4 lbs / 632 g	A100EST
Ayus 1 1/2" female to 1 1/2" male EST	150 psi /10 bar /1,035 kPa	3.7 lbs / 1700 g	A150EST
Ayus 2" female to 2" male EST	150 psi /10 bar /1,035 kPa	9 lbs / 408 g	A200EST
Ayus 2 1/2" female to 2 1/2" male EST	150 psi /10 bar /1,035 kPa	10.5 lbs / 4.8 kg	A250EST

## AYUS INDUSTRIAL DEVICES

INDUSTRIAL WATER DEVICES	MAX. PRESSURE RATING*1	FITTING WEIGHT	CATALOG NUMBER
Ayus 3" DIN Flange	DIN PN25	30 lbs / 13.4 kg	A300DF
Ayus 4" DIN Flange	DIN PN25	52 lbs / 23.4 kg	A400DF
Ayus 6" DIN Flange	DIN PN25	83 lbs / 37.6 kg	A600DF
Ayus 8" DIN Flange	DIN PN25	170 lbs / 77.3 kg	A800DF
Ayus 10" DIN Flange	DIN PN25	290 lbs / 131 kg	A1000DF

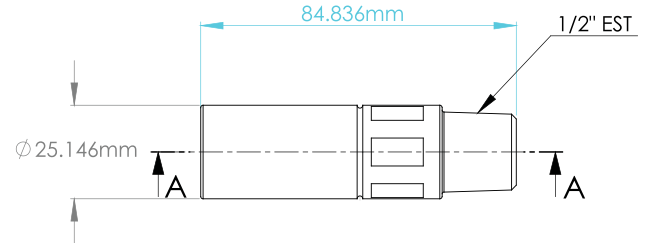
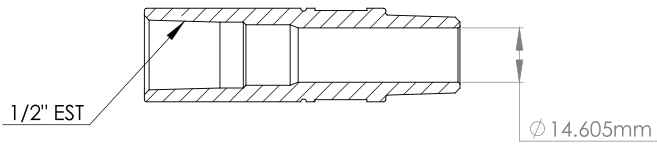
# AYUS COMMERCIAL DEVICES



## A050EST - 1/2"

.5" EST BODY

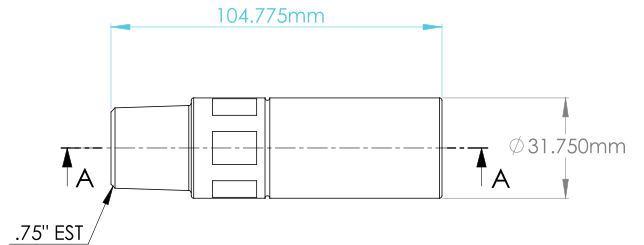
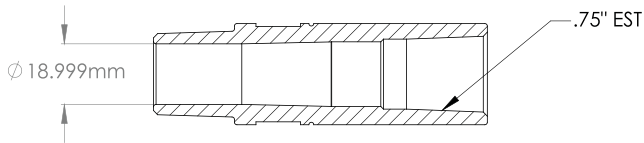
DRAWING NOT TO SCALE



## A075EST - 3/4"

.75" EST BODY

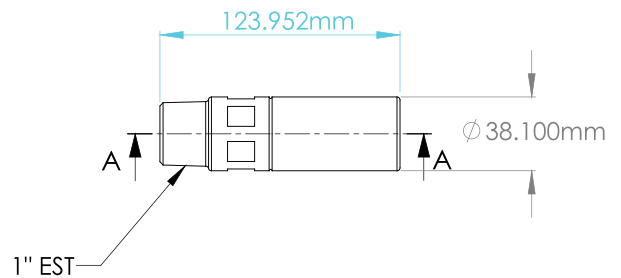
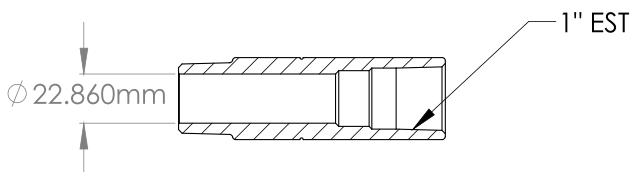
DRAWING NOT TO SCALE



## A100EST - 1"

1" EST BODY

DRAWING NOT TO SCALE



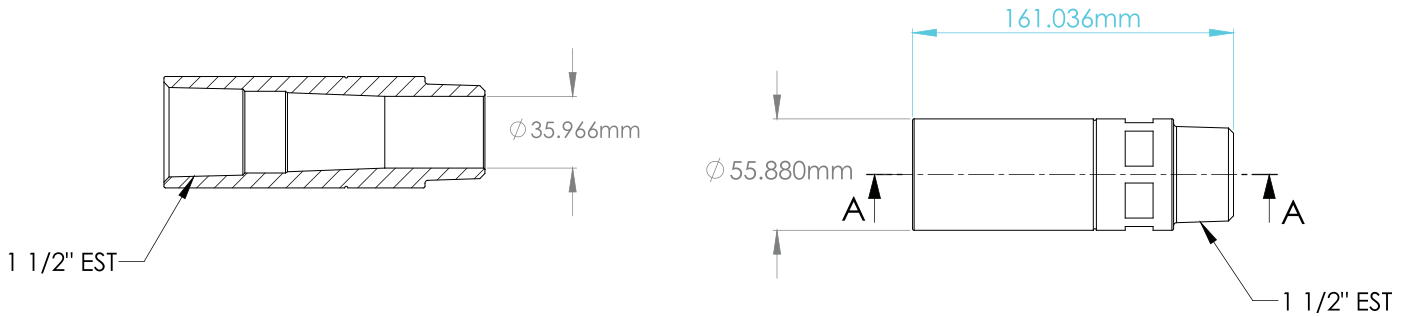
# AYUS COMMERCIAL DEVICES



## A150EST - 1 1/2"

1.5" EST BODY

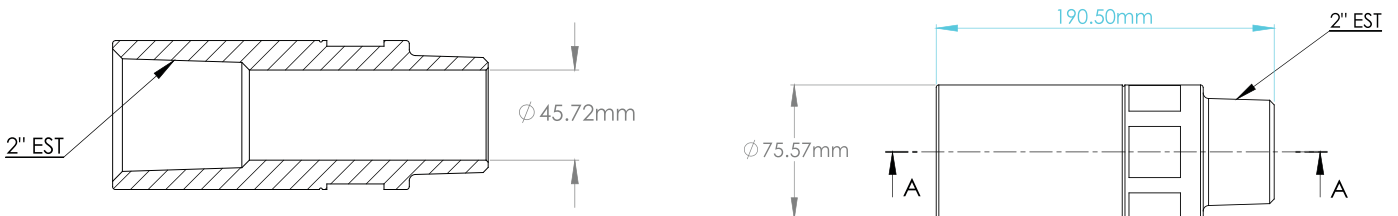
DRAWING NOT TO SCALE



## A200EST - 2"

2" EST BODY

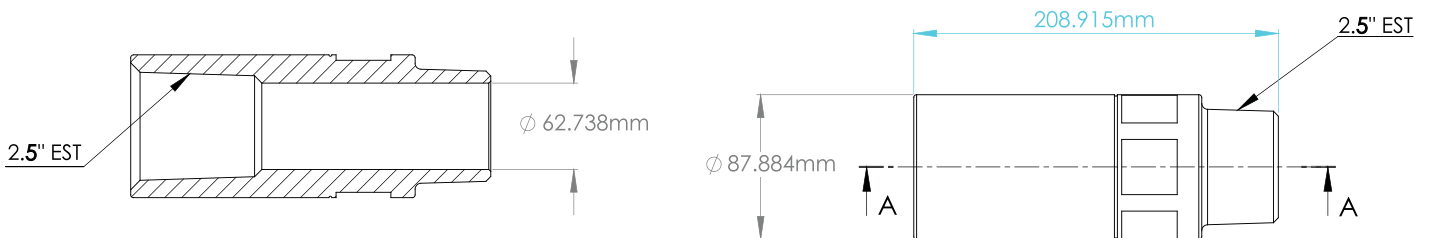
DRAWING NOT TO SCALE



## A250EST - 2 1/2"

2.5" EST BODY

DRAWING NOT TO SCALE



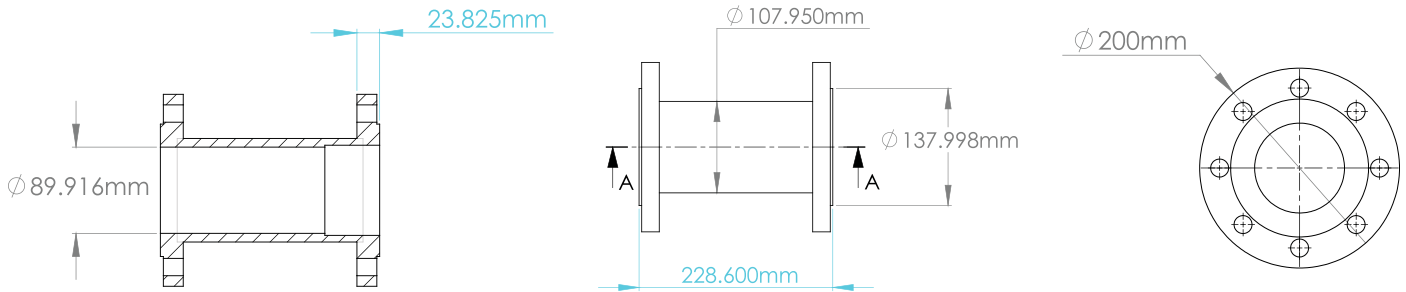
# AYUS INDUSTRIAL DEVICES



**A300DF - 3"**

3" DF BODY

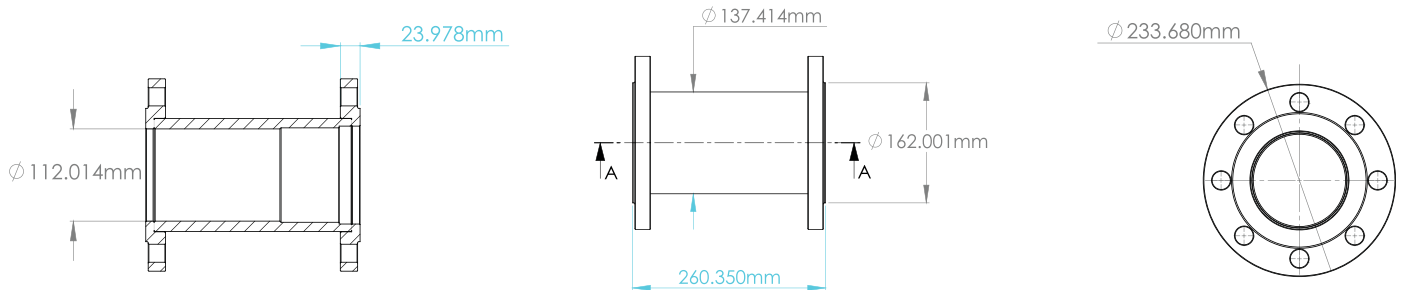
DRAWING NOT TO SCALE



**A400DF - 4"**

4" DF BODY

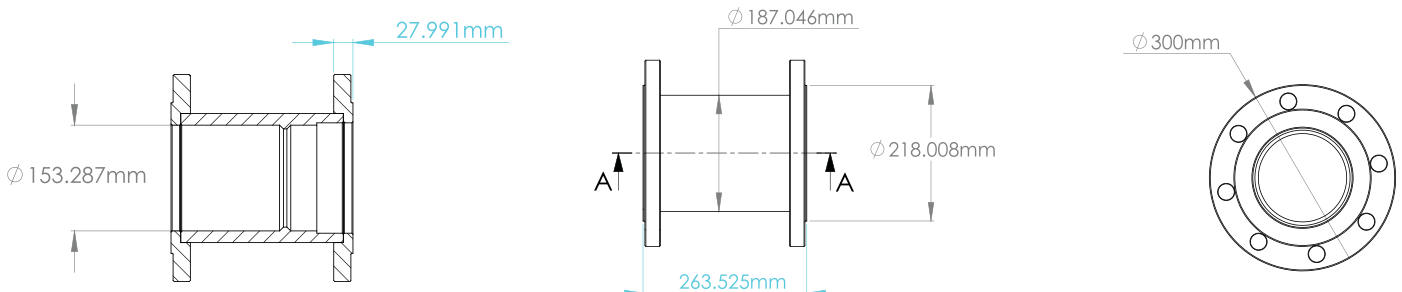
DRAWING NOT TO SCALE



**A600DF - 6"**

6" DF BODY

DRAWING NOT TO SCALE



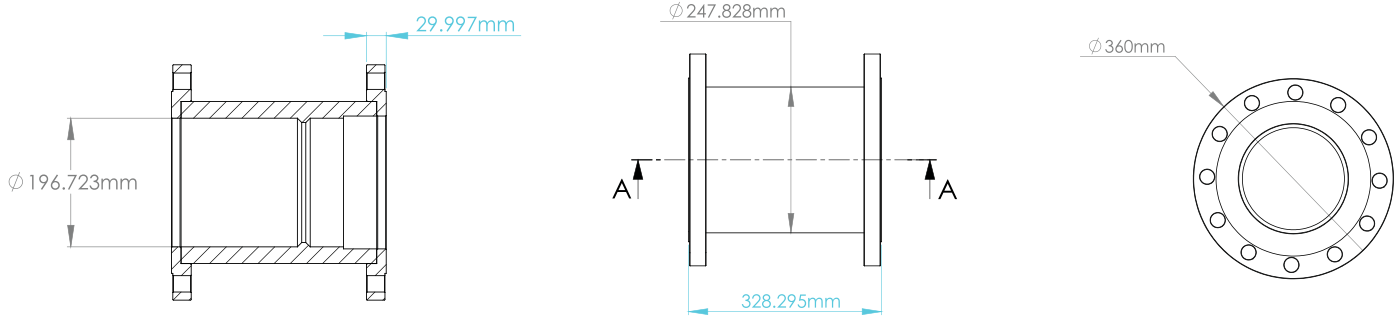
# AYUS INDUSTRIAL DEVICES



A800DF - 8"

8" DF BODY

DRAWING NOT TO SCALE



## LARGER SIZES

FOR LARGER SIZES PLEASE CONTACT AYUS

Give us a call **800-900-6045** or send an email to **info@ayuswater.com**

# INSTALLATION GUIDE

We recommend that you enlist the expertise of a plumber, engineer or your maintenance staff.

## Used to service a building

- ✓ For best results, the Ayus Water Activation Device should be the last device installed on the cold water line, as close as possible to the building's equipment.
- ✓ The device should be installed on the cold water main line after municipal water meters and backflow check valves (see attached diagram of a typical installation).
- ✓ If the building uses a filter system and/or water softener, the Ayus Water Activation Device should be installed past these systems.

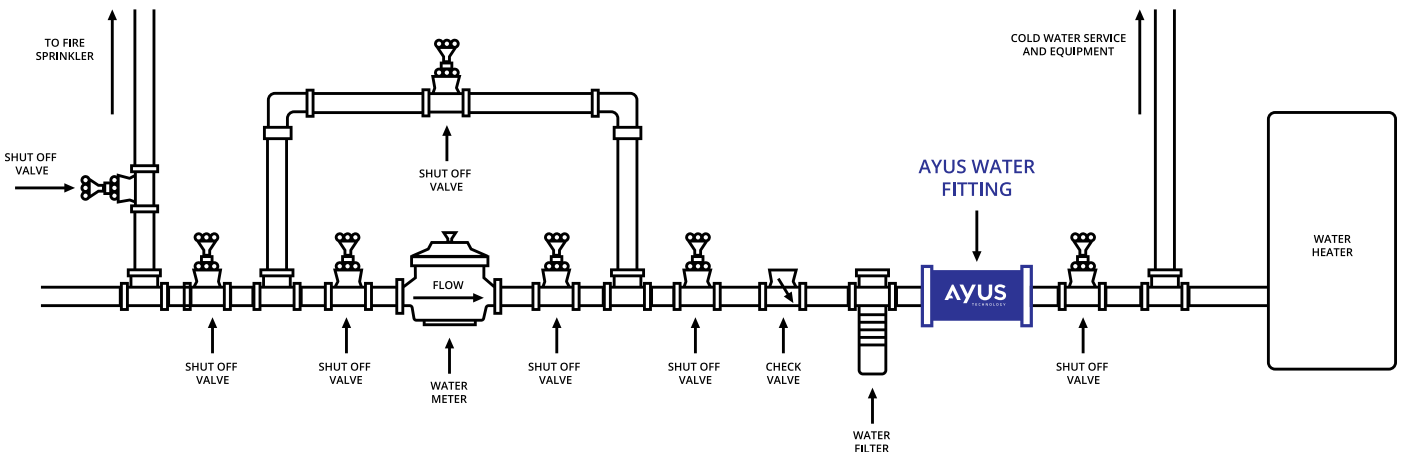
## Used to service specific equipment

- ✓ The Ayus Water Activation Device should be installed as close as possible to the water intake.

## Flow direction

To ensure that the Ayus Water Activation Device is installed with the water flow in the correct direction, please look for the arrow on device.

For best results, the Ayus Water Activation Device should be the last device installed on the cold water line, as close as possible to the building's equipment.



For further assistance or any questions, please call **800-900-6045** or send an email to [info@ayuswater.com](mailto:info@ayuswater.com)



## CONTACT US

Have further questions or inquiries? Let us know how we can help and if we can provide you with more information. Give us a call **800-900-6045** or send an email to **[info@ayuswater.com](mailto:info@ayuswater.com)**

### Satisfied Clients



PERFECT WATER  
AYUSWATER.COM